

Darwin Initiative/Darwin Plus Projects

Half Year Report

(due 31st October 2021)

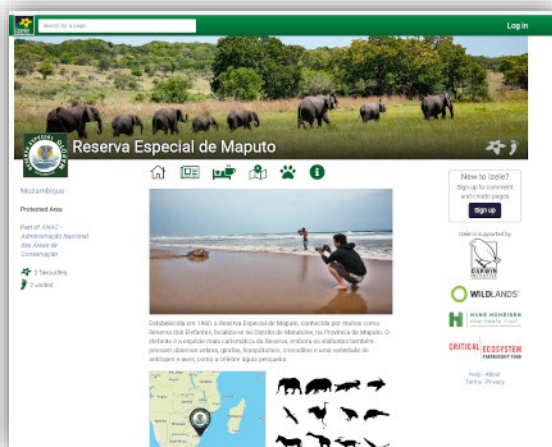
Project reference	25-003
Project title	Conservation social networking, ecotourism and land-use planning in Maputaland
Country(ies)/territory(ies)	Eswatini and Mozambique
Lead organisation	DICE, University of Kent
Partner(s)	All Out Africa, ANAC, KUWUKA JDA, SNTC, UEM, UNISWA
Project leader	Bob Smith
Report date and number (e.g. HYR1)	HYR4
Project website/blog/social media	https://izele.org/projects/278

1. Outline progress over the last 6 months (April – Sept) against the agreed project implementation timetable (if your project has started less than 6 months ago, please report on the period since start up to end September).

Output 1

Activity 1.4. Publicise Izele; support & monitor page creation.

As an additional output, we added the Home Tab feature to all Izele pages, which summaries the information and lets users add text and a photo to promote their work (Figure 1a). We have continued to encourage and support page creation in Izele, both through the work of All Out Africa and KUWUKA JDA, and by broader social media promotion. The most significant change is that Administração Nacional das Áreas de Conservação (ANAC) have created pages for all the National Parks and National Reserves in Mozambique (Figure 1b).



Output 3. Produce Maputaland conservation land-use zoning system

Activity 3.1. Update the GIS data in conservation planning system.

By extending our project into Year 4, we have been able to use the latest species distribution data in our conservation planning system. This means we now have accurate distribution maps for 187 species of amphibians, birds, freshwater fish, invertebrates, mammals, plants and reptiles, far exceeding our original plan to include data on 53 species.

3.4. Conservation land-use zoning prioritisation

We incorporated the new species data and updated landcover map (Figure 2a) into the CLUZ conservation planning system for Maputaland. We then worked with our conservation science partners from ENTC and UNESWA in Eswatini, IEM and UEM in Mozambique and Ezemvelo KwaZulu-Natal Wildlife in South Africa to set targets for how much of each landcover type and species range should be managed for conservation, complementing the existing protected area network. The first set of outputs are shown below, highlighting the most efficient way to meet the targets while maintaining connectivity and minimising opportunity costs (Figure 2b) and the most important areas for meeting the targets (Figure 2c). These outputs now need to be reviewed by the conservation science team and other partners before we produce the final conservation zoning maps by December 2021 (3 months later than originally planned).

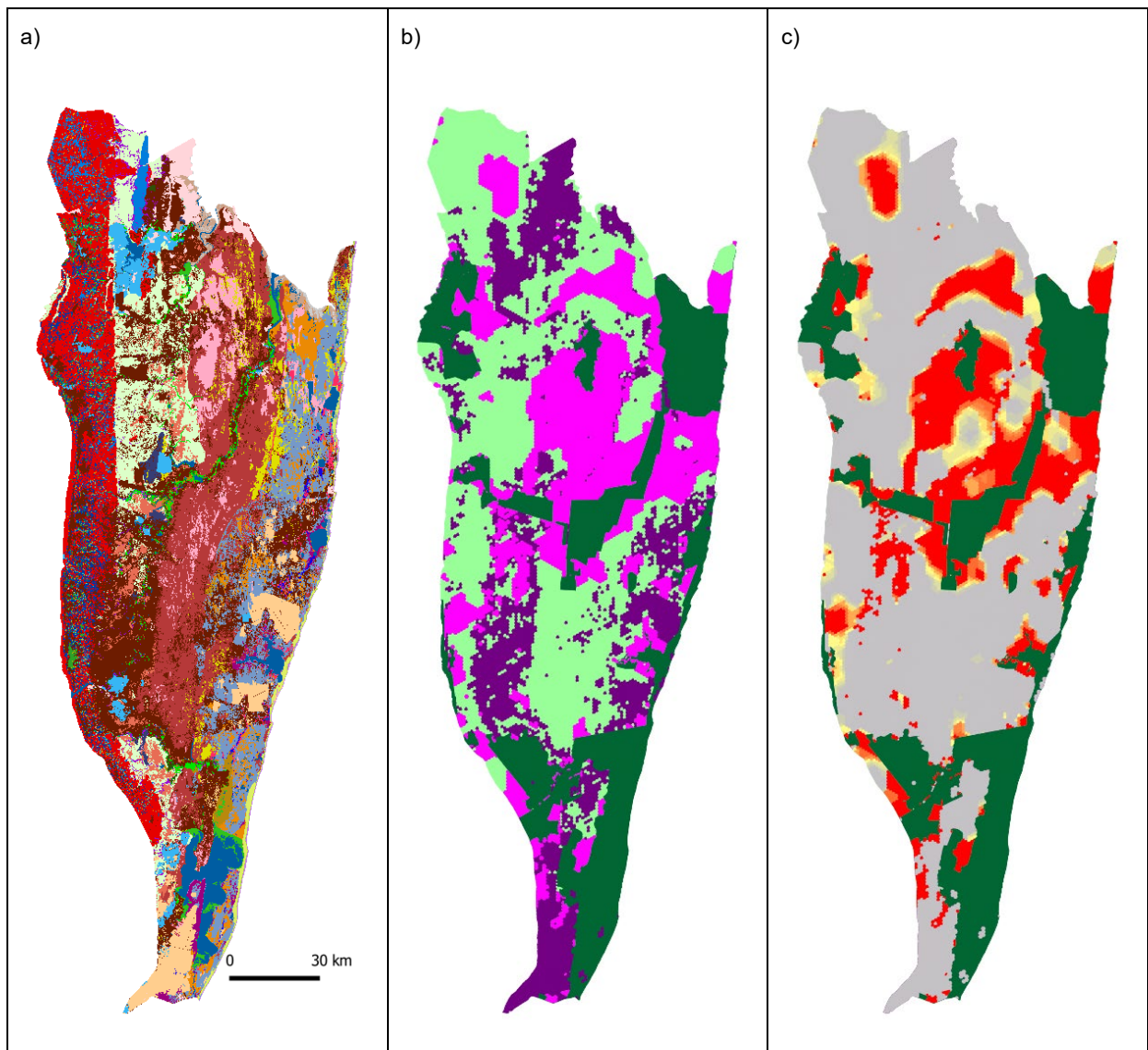


Figure 2: (a) Landcover map; (b) draft spatial zoning plan, showing existing protected areas in green, urban and agricultural land in dark purple and new priority areas for conservation in magenta; (c) irreplaceability map showing areas most important for meeting the conservation targets in red.

2a. Give details of any notable problems or unexpected developments/lessons learnt that the project has encountered over the last 6 months (for COVID-19 specific delays/problems, please use 2b). Explain what impact these could have on the project and whether the changes will affect the budget and timetable of project activities.

The only problems and unexpected developments we had were related to COVID-19 and described below.

2b. Please outline any specific issues which your project has encountered as a result of COVID-19. Where you have adapted your project activities in response to the pandemic, please briefly outline how you have done so here. Explain what residual impact there may be on your project and whether the changes will affect the budget and timetable of project activities.

We had the incredibly sad news that Camilo Nhancale, the project lead from KUWUKA JDA, passed away from COVID-19 in August 2021. He played a really important role in our project and was a lovely man, so will be sorely missed. His colleagues from KUWUKA JDA will continue to support our project.

In comparison to that, the other impacts of the pandemic have been unimportant but we have had to adapt in several ways. One specific issue is that Hermen Matimele from DICE and UEM was not able to return to the UK from Mozambique because of the costs of quarantining in the UK, so his progress on completing the spatial conservation prioritisation for Maputaland has been delayed because of having more limited access to the resources at DICE. However, he has still done a great job in achieving what we have described in section 1 and he plans to return to DICE in November, which will make completing the work much easier.

More broadly, the pandemic continues to impact ecotourism in Eswatini and Mozambique and so many of the organisations that have created pages on the Izele network are struggling with their resourcing.

We will have a meeting next month to discuss our plans for the final events to publicise the spatial planning outputs of the project and decide whether they will be in person or online. This will not impact the budget or timetable of activities.

2c. Have any of these issues been discussed with LTS International and if so, have changes been made to the original agreement?

Discussed with LTS: ~~Yes~~/No

Formal change request submitted: ~~Yes~~/No

Received confirmation of change acceptance ~~Yes~~/No

3a. Do you currently expect to have any significant (e.g. more than £5,000) underspend in your budget for this year?

Yes No Estimated underspend: £

3b. If yes, then you need to consider your project budget needs carefully. Please remember that any funds agreed for this financial year are only available to the project in this financial year.

If you anticipate a significant underspend because of justifiable changes within the project, please submit a rebudget Change Request as soon as possible. There is no guarantee that Defra will agree a rebudget so please ensure you have enough time to make appropriate changes if necessary. Please DO NOT send these in the same email as your report.

4. Are there any other issues you wish to raise relating to the project or to Darwin's management, monitoring, or financial procedures?

N/A

If you were asked to provide a response to this year's annual report review with your next half year report, please attach your response to this document.

Please note: Any planned modifications to your project schedule/workplan can be discussed in this report but **should also be raised with LTS International through a Change Request. **Please DO NOT send these in the same email.****

Please send your **completed report by email** to Darwin-Projects@ltsi.co.uk. The report should be between 2-3 pages maximum. **Please state your project reference number in the header of your email message e.g. Subject: 25-001 Darwin Half Year Report**